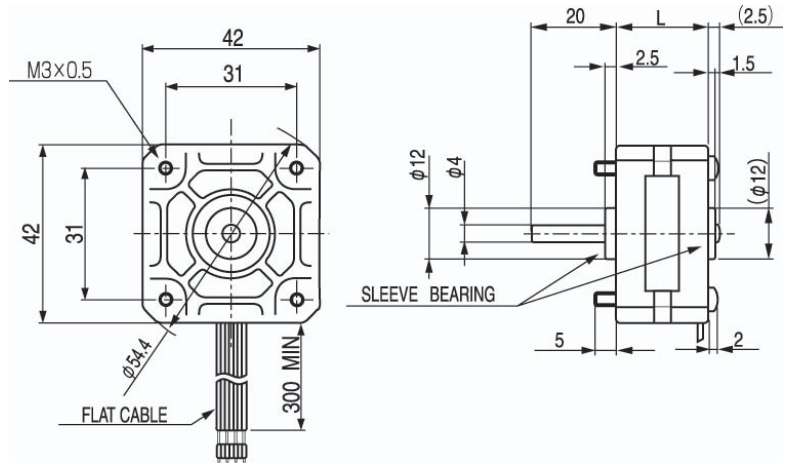




Model SST41D
4 Lead Wire
22mm L,
1.8° step

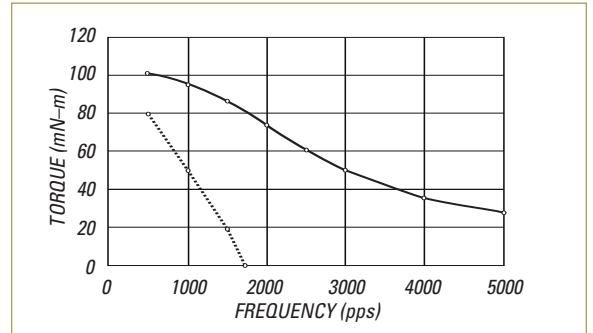


Specifications

MODEL	STEP ANGLE DEG.	VOLTAGE V	CURRENT A/Phase	RESISTANCE Ω /Phase	INDUCTANCE mH/Phase	HOLDING TORQUE kg-cm	ROTOR INERTIA g-cm ²	NUMBER OF LEADS LEAD	WEIGHT kg	DIMENSION L
SST41D0100	1.8	2.3	1.0	2.3	3.9	1.2	20.3	4	0.15	22

RoHS compliant

Typical Performance (Uni-polar wiring) — Pull Out - - - Pull In



Refer to page 41 for Driver Information